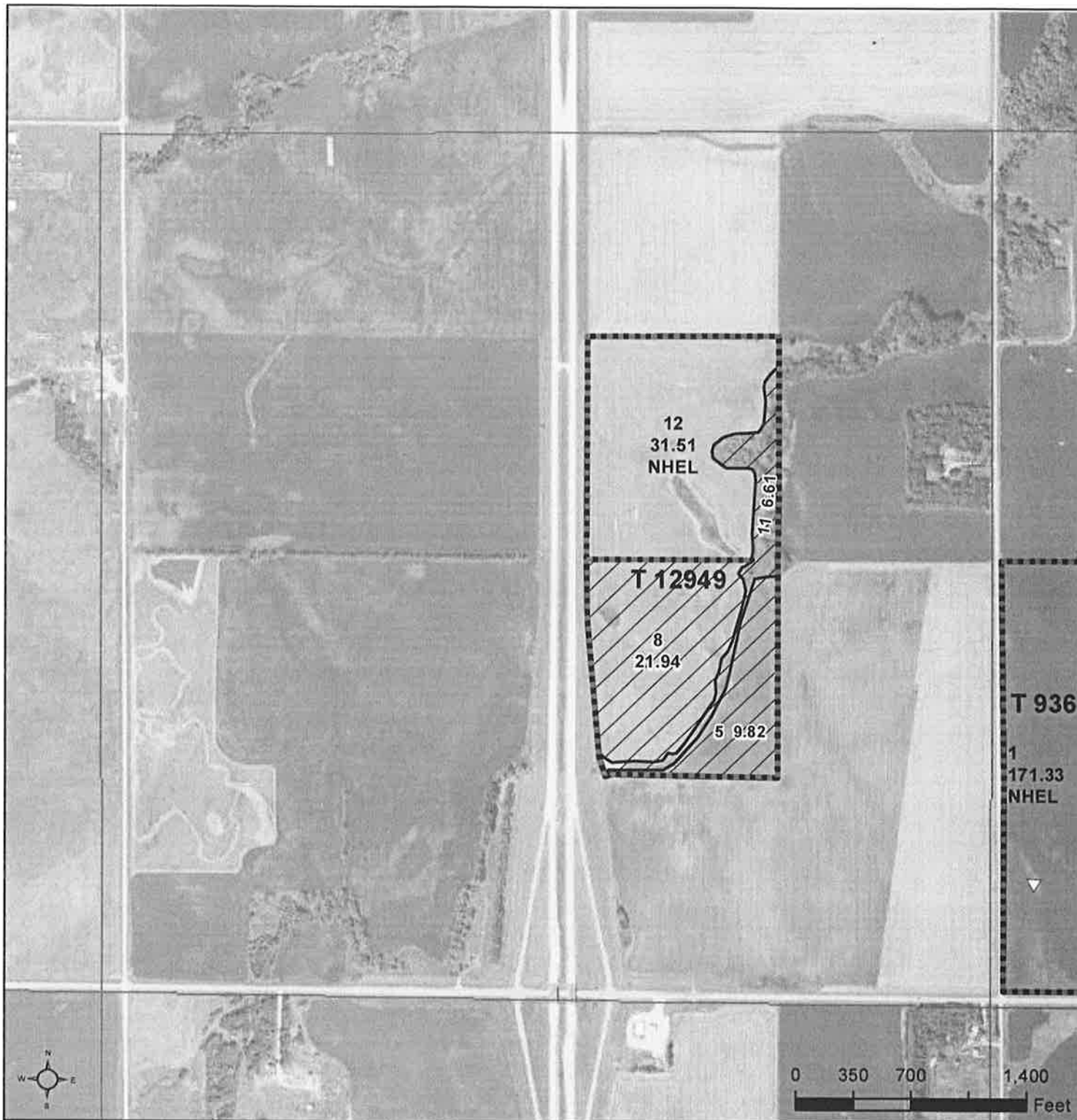




United States
Department of
Agriculture

Roberts County, South Dakota



Common Land Unit

Non-Cropland
Cropland

Tract Boundary
PLSS

Wetland Determination

- Restricted Use
- ▽ Limited
- Exempt from Conservation
- Compliance Provisions

2018 Program Year

Map Created January 31, 2018

Farm 10463

1-124N-51LW

United States Department of Agriculture (USDA) Farm Service Agency (FSA) maps are for FSA Program administration only. This map does not represent a legal survey or reflect actual ownership; rather it depicts the information provided directly from the producer and/or National Agricultural Imagery Program (NAIP) imagery. The producer accepts the data 'as is' and assumes all risks associated with its use. USDA-FSA assumes no responsibility for actual or consequential damage incurred as a result of any user's reliance on this data outside FSA Programs. Wetland identifiers do not represent the size, shape, or specific determination of the area. Refer to your original determination (CPA-026 and attached maps) for exact boundaries and determinations or contact USDA Natural Resources Conservation Service (NRCS).

2012
①

Rodney &
Mark
Leiseth

T-2010

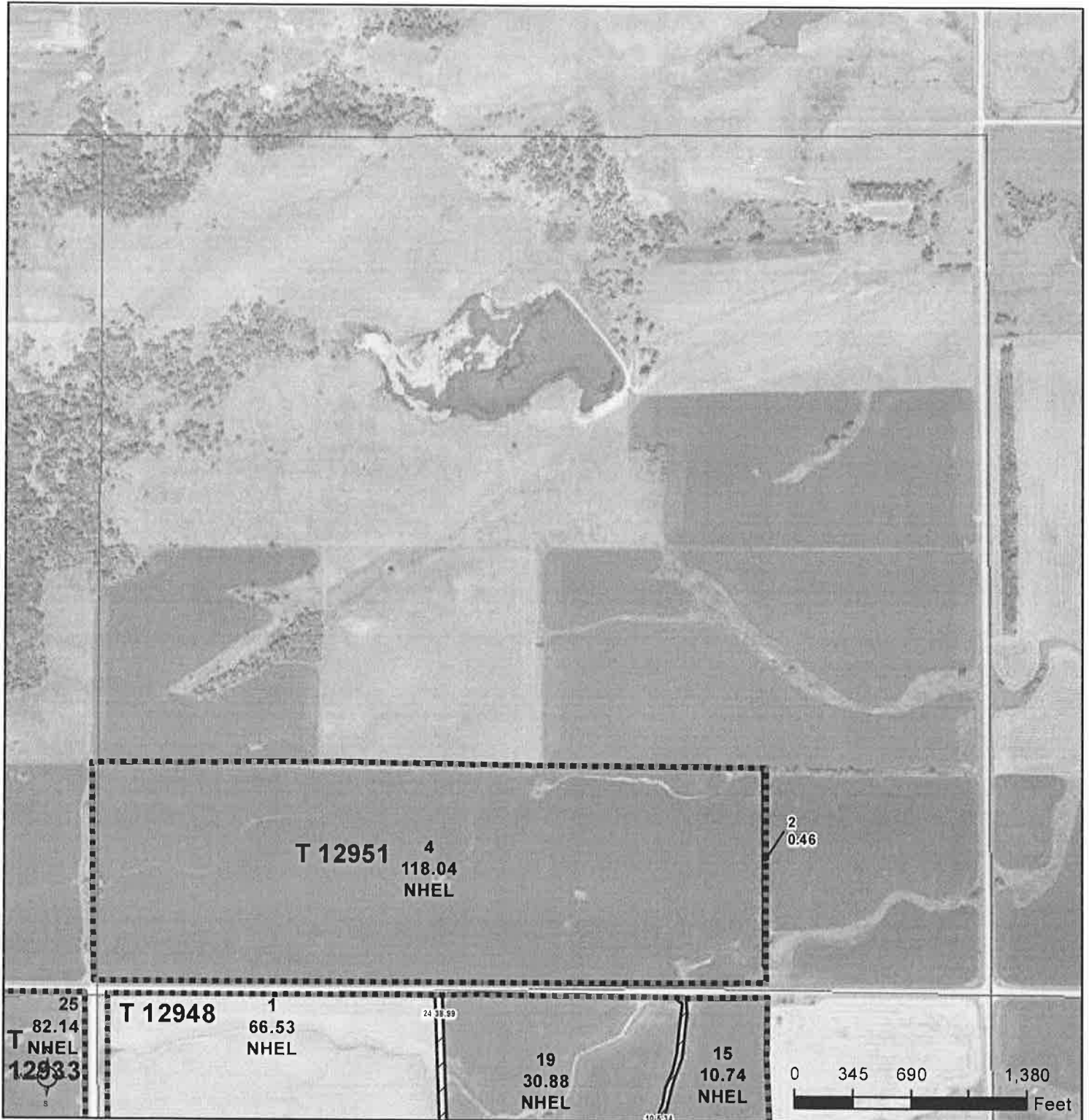
Rodney &
Mark
Leiseth

T-2011



United States
Department of
Agriculture

Roberts County, South Dakota



Common Land Unit

Symbol	Description
	Tract Boundary
	Non-Cropland
	Cropland
	PLSS

Wetland Determination

- Restricted Use
- Limited
- Exempt from Conservation Compliance Provisions

United States Department of Agriculture (USDA) Farm Service Agency (FSA) maps are for FSA Program administration only. This map does not represent a legal survey or reflect actual ownership; rather it depicts the information provided directly from the producer and/or National Agricultural Imagery Program (NAIP) imagery. The producer accepts the data 'as is' and assumes all risks associated with its use. USDA-FSA assumes no responsibility for actual or consequential damage incurred as a result of any user's reliance on this data outside FSA Programs. Wetland identifiers do not represent the size, shape, or specific determination of the area. Refer to your original determination (CPA-026 and attached maps) for exact boundaries and determinations or contact USDA Natural Resources Conservation Service (NRCS).

2018 Program Year

Map Created January 31, 2018

Farm 10463

3-124N-51LW

19.5
①

Ole Tonniss, Est.

T-932

39.5
①

(W)

Upper
Chamber

T-926

67.5
①

18.3
②



United States
Department of
Agriculture

Roberts County, South Dakota



Common Land Unit

- Non-Cropland
- Cropland

- Tract Boundary
- PLSS

Wetland Determination

- Restricted Use
- Limited
- Exempt from Conservation
- Compliance Provisions

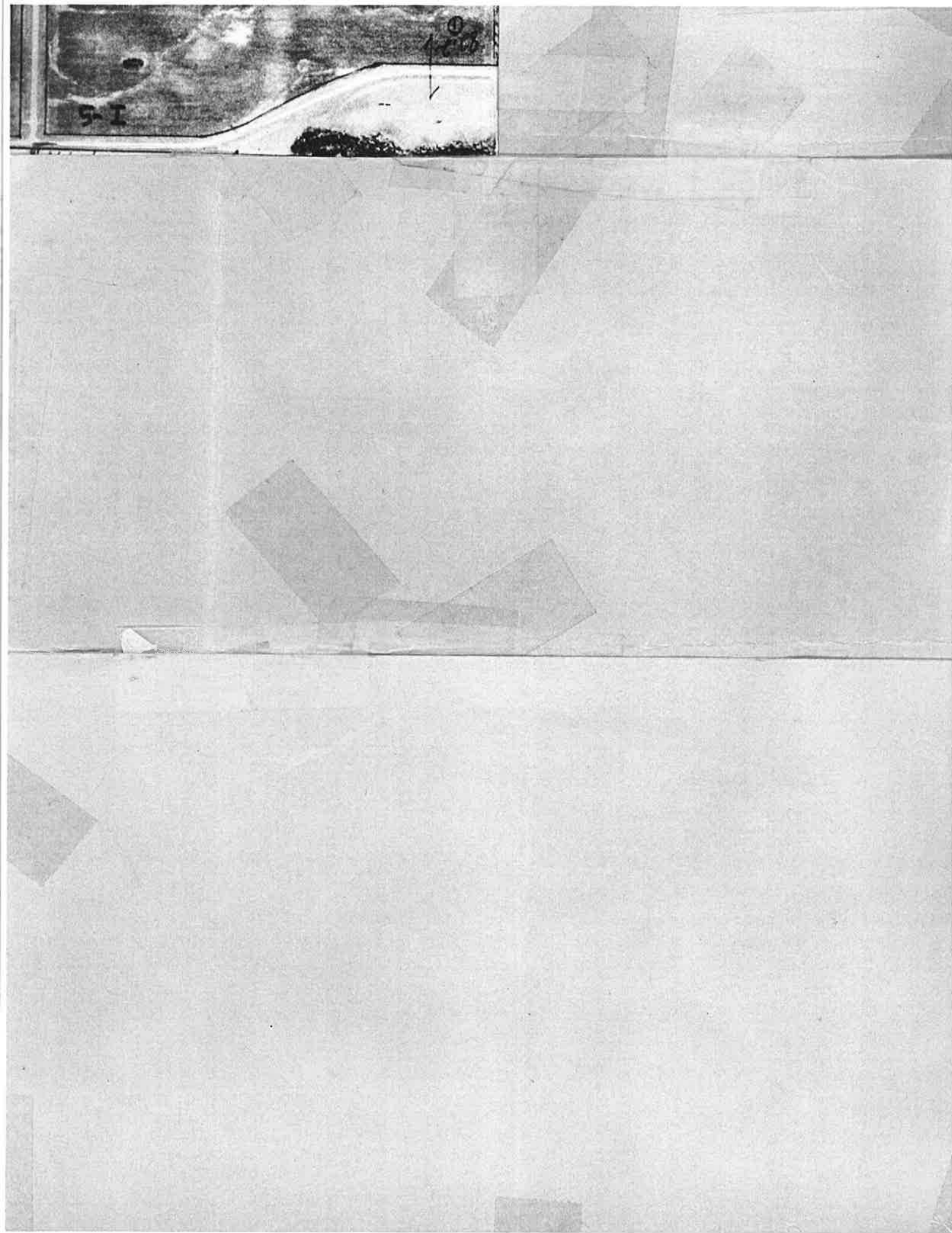
2018 Program Year

Map Created January 31, 2018

Farm 10463

4-124N-51LW

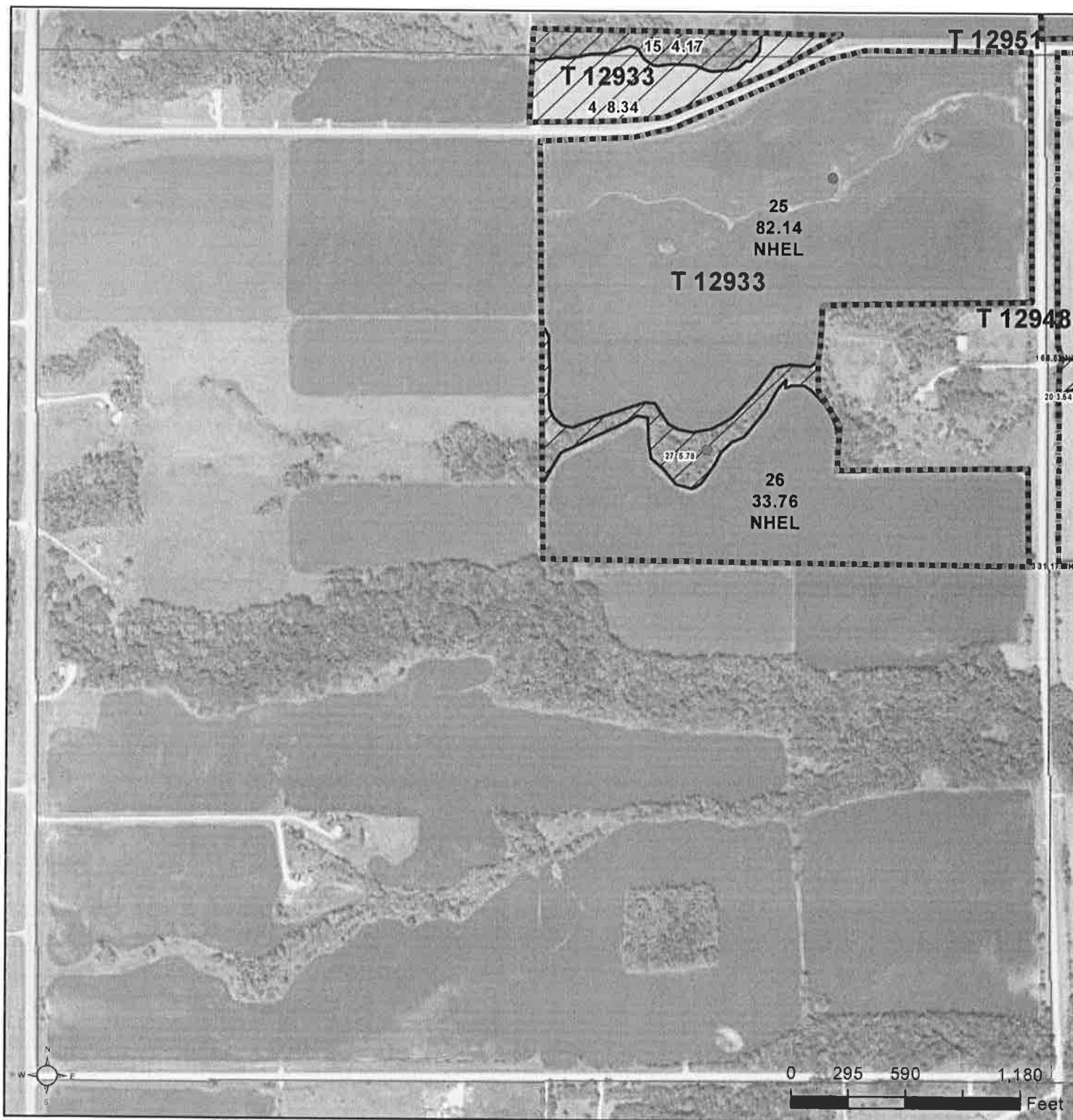
United States Department of Agriculture (USDA) Farm Service Agency (FSA) maps are for FSA Program administration only. This map does not represent a legal survey or reflect actual ownership; rather it depicts the information provided directly from the producer and/or National Agricultural Imagery Program (NAIP) imagery. The producer accepts the data 'as is' and assumes all risks associated with its use. USDA-FSA assumes no responsibility for actual or consequential damage incurred as a result of any user's reliance on this data outside FSA Programs. Wetland identifiers do not represent the size, shape, or specific determination of the area. Refer to your original determination (CPA-026 and attached maps) for exact boundaries and determinations or contact USDA Natural Resources Conservation Service (NRCS).





United States
Department of
Agriculture

Roberts County, South Dakota



Common Land Unit

	Tract Boundary
	PLSS
	Non-Cropland
	Cropland

Wetland Determination

- Restricted Use
- Limited
- Exempt from Conservation
- Compliance Provisions

2018 Program Year

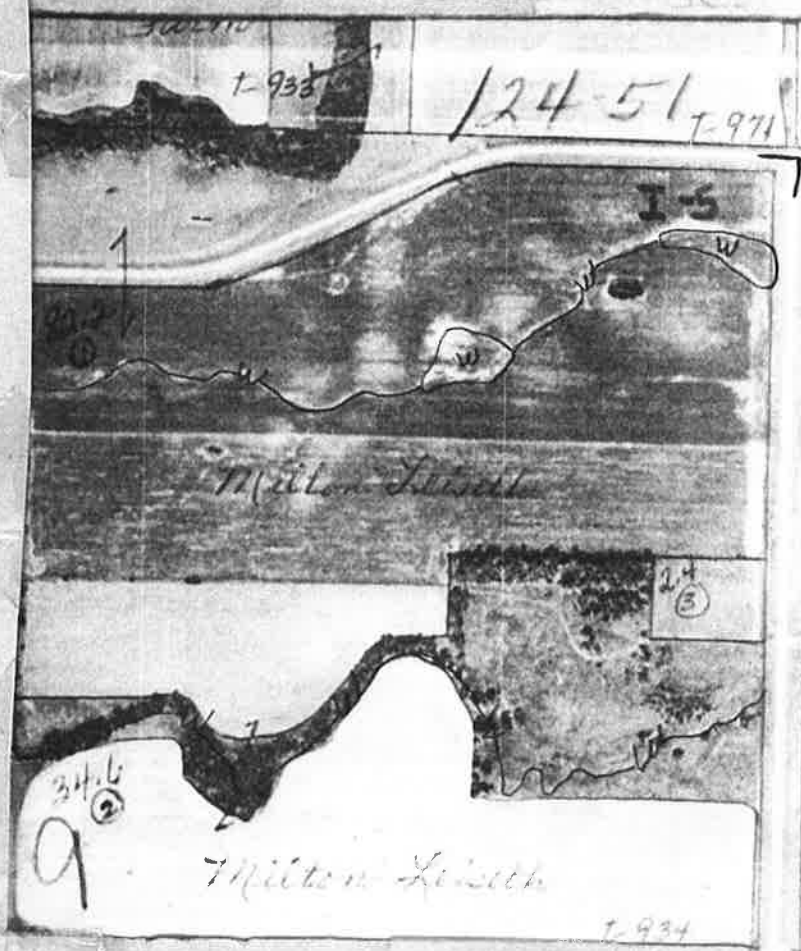
Map Created January 31, 2018

Farm 10463

9-124N-51LW

United States Department of Agriculture (USDA) Farm Service Agency (FSA) maps are for FSA Program administration only. This map does not represent a legal survey or reflect actual ownership; rather it depicts the information provided directly from the producer and/or National Agricultural Imagery Program (NAIP) imagery. The producer accepts the data 'as is' and assumes all risks associated with its use. USDA-FSA assumes no responsibility for actual or consequential damage incurred as a result of any user's reliance on this data outside FSA Programs. Wetland identifiers do not represent the size, shape, or specific determination of the area. Refer to your original determination (CPA-026 and attached maps) for exact boundaries and determinations or contact USDA Natural Resources Conservation Service (NRCS).

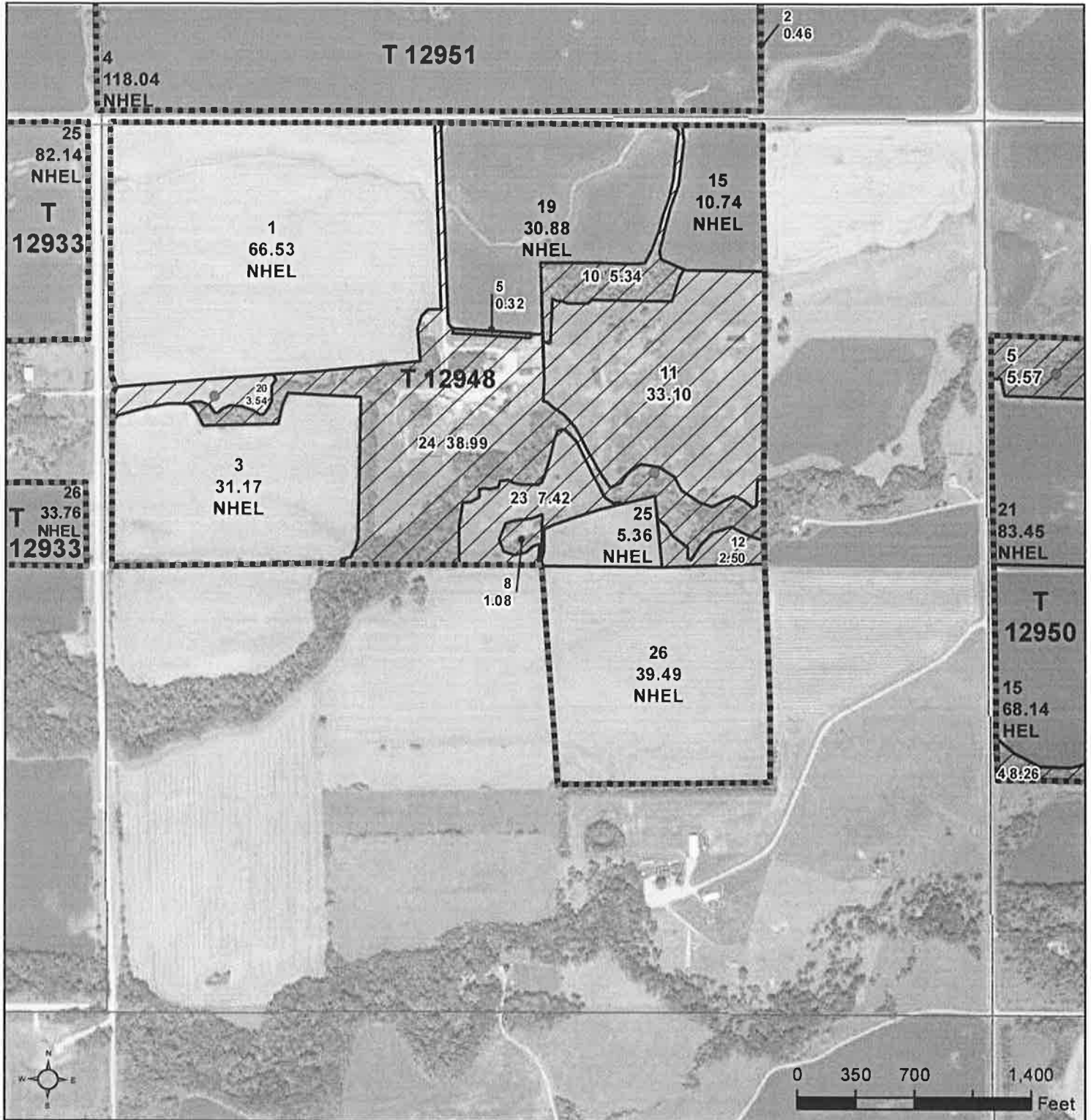
SCALE





United States
Department of
Agriculture

Roberts County, South Dakota



Common Land Unit

	Tract Boundary
	PLSS
	Non-Cropland
	Cropland

Wetland Determination

- Restricted Use
- Limited
- Exempt from Conservation
- Compliance Provisions

2018 Program Year

Map Created January 31, 2018

Farm 10463

10-124N-51LW

United States Department of Agriculture (USDA) Farm Service Agency (FSA) maps are for FSA Program administration only. This map does not represent a legal survey or reflect actual ownership; rather it depicts the information provided directly from the producer and/or National Agricultural Imagery Program (NAIP) imagery. The producer accepts the data 'as is' and assumes all risks associated with its use. USDA-FSA assumes no responsibility for actual or consequential damage incurred as a result of any user's reliance on this data outside FSA Programs. Wetland identifiers do not represent the size, shape, or specific determination of the area. Refer to your original determination (CPA-026 and attached maps) for exact boundaries and determinations or contact USDA Natural Resources Conservation Service (NRCS).

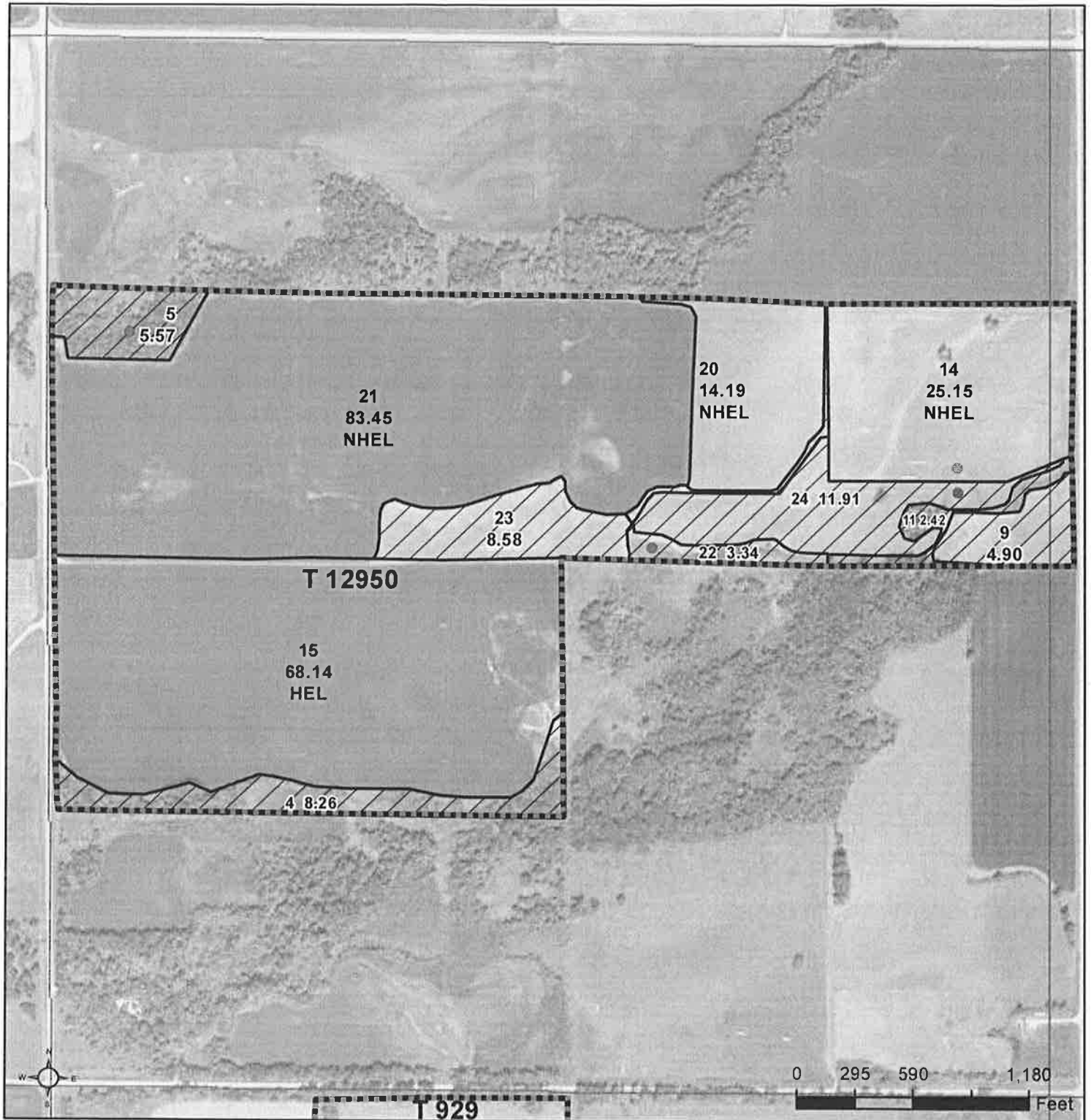
NOT TO SCALE





United States
Department of
Agriculture

Roberts County, South Dakota



Common Land Unit

	Non-Cropland
	Cropland

Tract Boundary
 PLSS

Wetland Determination

- Restricted Use
- Limited
- Exempt from Conservation
- Compliance Provisions

2018 Program Year

Map Created January 31, 2018

Farm 10463

11-124N-51LW

United States Department of Agriculture (USDA) Farm Service Agency (FSA) maps are for FSA Program administration only. This map does not represent a legal survey or reflect actual ownership; rather it depicts the information provided directly from the producer and/or National Agricultural Imagery Program (NAIP) imagery. The producer accepts the data 'as is' and assumes all risks associated with its use. USDA-FSA assumes no responsibility for actual or consequential damage incurred as a result of any user's reliance on this data outside FSA Programs. Wetland identifiers do not represent the size, shape, or specific determination of the area. Refer to your original determination (CPA-026 and attached maps) for exact boundaries and determinations or contact USDA Natural Resources Conservation Service (NRCS).

829
①

63.3
①

Elnora Hampton

252
①

Dale Hampton

T-942

T-939

Alice Dahl

②

T-930



United States
Department of
Agriculture

Roberts County, South Dakota



Common Land Unit

	Tract Boundary
	Non-Cropland
	Cropland
	PLSS

Wetland Determination

- Restricted Use
- Limited
- Exempt from Conservation
- Compliance Provisions

United States Department of Agriculture (USDA) Farm Service Agency (FSA) maps are for FSA Program administration only. This map does not represent a legal survey or reflect actual ownership; rather it depicts the information provided directly from the producer and/or National Agricultural Imagery Program (NAIP) imagery. The producer accepts the data 'as is' and assumes all risks associated with its use. USDA-FSA assumes no responsibility for actual or consequential damage incurred as a result of any user's reliance on this data outside FSA Programs. Wetland identifiers do not represent the size, shape, or specific determination of the area. Refer to your original determination (CPA-026 and attached maps) for exact boundaries and determinations or contact USDA Natural Resources Conservation Service (NRCS).

2018 Program Year

Map Created January 31, 2018

Farm 10463

14-124N-51LW

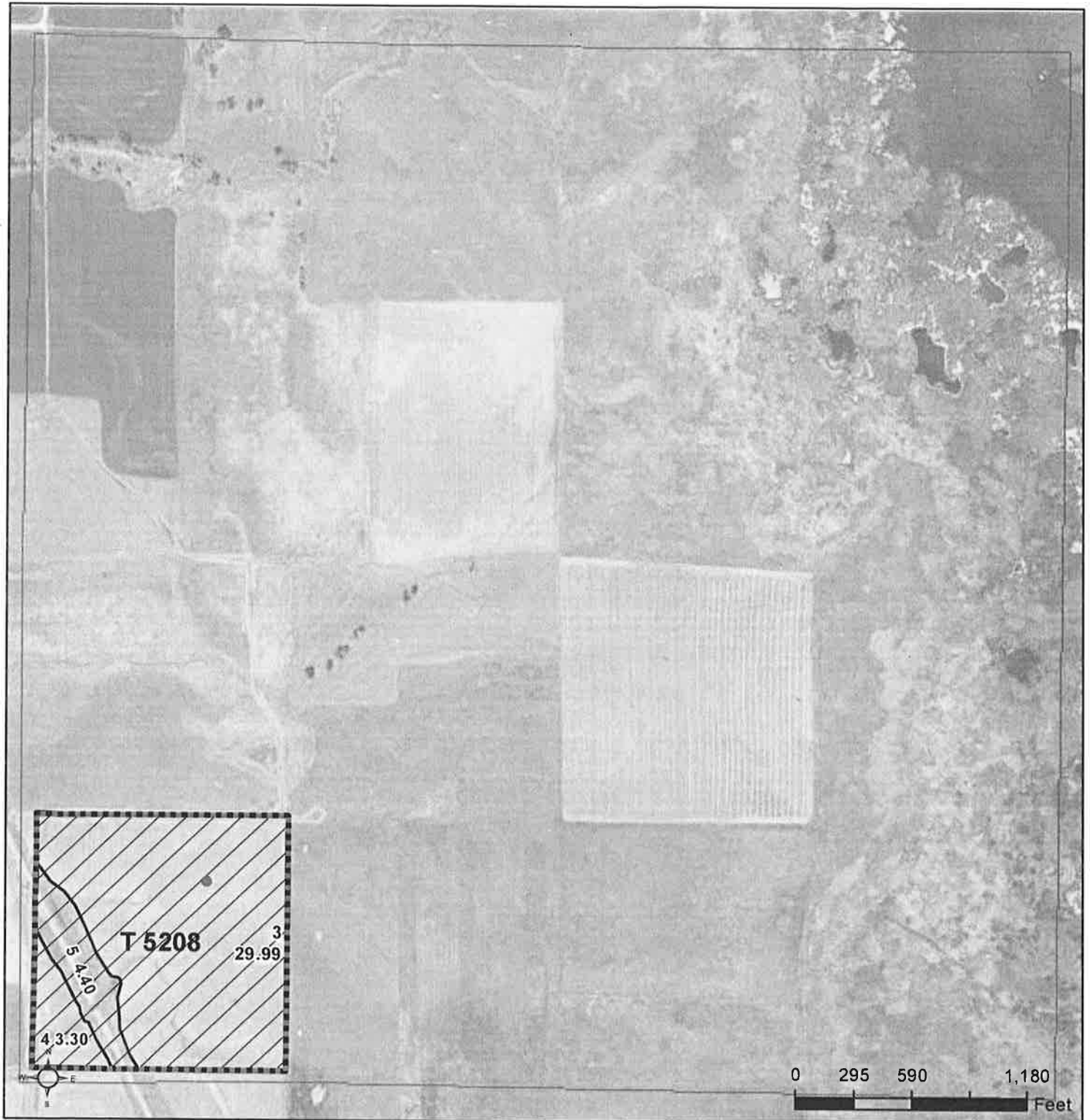
NOT TO





United States
Department of
Agriculture

Roberts County, South Dakota



Common Land Unit ☐ PLSS

☒ Non-Cropland
☒ Tract Boundary

Wetland Determination

- ☒ Restricted Use
- ☒ Limited
- ☒ Exempt from Conservation Compliance Provisions

United States Department of Agriculture (USDA) Farm Service Agency (FSA) maps are for FSA Program administration only. This map does not represent a legal survey or reflect actual ownership; rather it depicts the information provided directly from the producer and/or National Agricultural Imagery Program (NAIP) imagery. The producer accepts the data 'as is' and assumes all risks associated with its use. USDA-FSA assumes no responsibility for actual or consequential damage incurred as a result of any user's reliance on this data outside FSA Programs. Wetland identifiers do not represent the size, shape, or specific determination of the area. Refer to your original determination (CPA-026 and attached maps) for exact boundaries and determinations or contact USDA Natural Resources Conservation Service (NRCS).

2018 Program Year

Map Created January 31, 2018

Farm 10463

30-125N-50LW



NOT TO SCALE

Robert Anderson
25

T-5208



United States
Department of
Agriculture

Roberts County, South Dakota



Common Land Unit

Non-Cropland
Cropland

Tract Boundary
PLSS

Wetland Determination

- Restricted Use
- Limited
- Exempt from Conservation Compliance Provisions

2018 Program Year

Map Created January 31, 2018

Farm 10463

6-124N-50LW

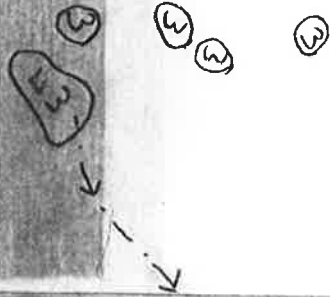
United States Department of Agriculture (USDA) Farm Service Agency (FSA) maps are for FSA Program administration only. This map does not represent a legal survey or reflect actual ownership; rather it depicts the information provided directly from the producer and/or National Agricultural Imagery Program (NAIP) imagery. The producer accepts the data 'as is' and assumes all risks associated with its use. USDA-FSA assumes no responsibility for actual or consequential damage incurred as a result of any user's reliance on this data outside FSA Programs. Wetland identifiers do not represent the size, shape, or specific determination of the area. Refer to your original determination (CPA-026 and attached maps) for exact boundaries and determinations or contact USDA Natural Resources Conservation Service (NRCS).

191.4

①



Miller's Lake



T-936

52.0

①



211.7

①

③